

Kaillie

Thurs. June 9/47.

Which is closer to $\frac{1}{2}$:

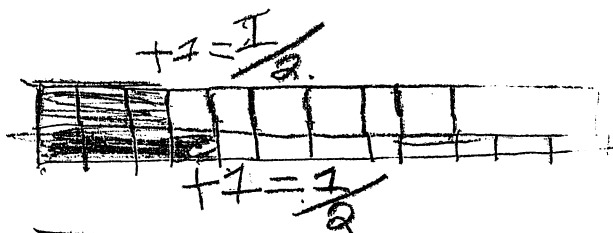
$\frac{3}{8}$ or $\frac{4}{10}$?

$$\begin{array}{r} 3 + 2 = 5 \\ \hline 8 + 2 = 10 \end{array}$$

$$\frac{3}{8}$$

How do you know?

I know because it is easier to do a fraction with the denominator as 10 so $\frac{3}{8} + 2 = \frac{5}{10}$ so, $\frac{3}{8}$ and when you put it on fraction rectangles it looks like this.....



but now

I have to do this...

